

An Introduction To Philmont

October Advisor Briefing

Where is Philmont?





Philmont

Base Camp

Philmont

- 219 square miles (140,177 acres) of rugged mountain wilderness
- Owned and operated by the Boy Scouts of America
- Mountains and valleys ranging from approximately 6,000 to 12,400 feet

Features of the Ranch

- Working ranch
- Horses, cattle, and buffalo
- Two of New Mexico's highest mountains
- Streams/Forests
- High Desert
- Mines

History of Philmont

- Originally home to the Jicarilla Apache, Ute and Comanche Indians
- Charles Beaubien and Guadalupe Miranda obtained a Mexican Land Grant in 1841 - 1.7 million acres
- Lucien Maxell married Luz Beaubien and eventually acquired the entire Beaubien-Miranda land grant

History of Philmont

- Maxwell sold to an English company in 1871
- The owners and squatters fought the 1876 Colfax County War over the land
- The land grant was broken up and sold in tracts for ranches and commercial development

History of Philmont

- The ranch supported the timber industry, railroads, and mining in the late 1800s and early 1900s
- Waite Phillips purchased 350,000 acres in the 1920s and closed the land to commercial development other than ranching



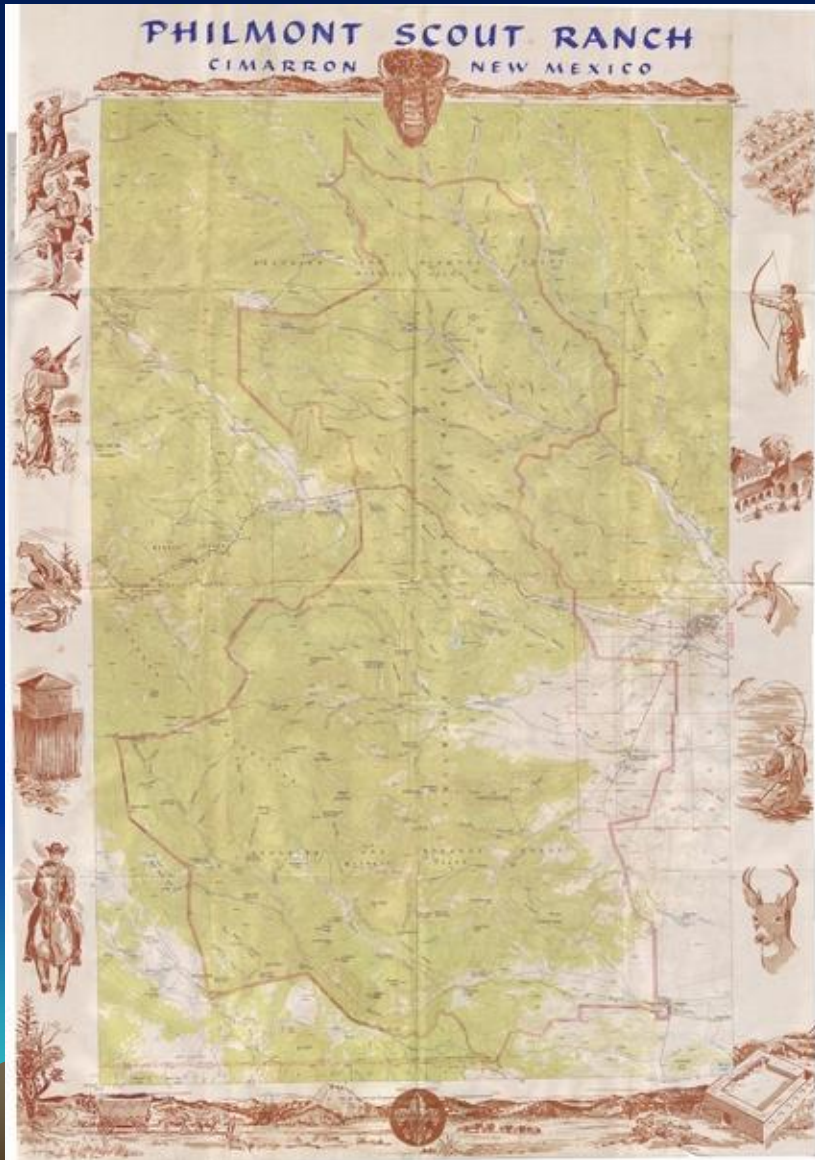
History of Philmont

- The ranch was the Phillips' summer home, where they entertained family and guests
- In 1938 Waite Phillips donated 35,857 acres to the Boy Scouts
- The camp was originally called Philturn Rocky Mountain Scout Camp.

History of Philmont

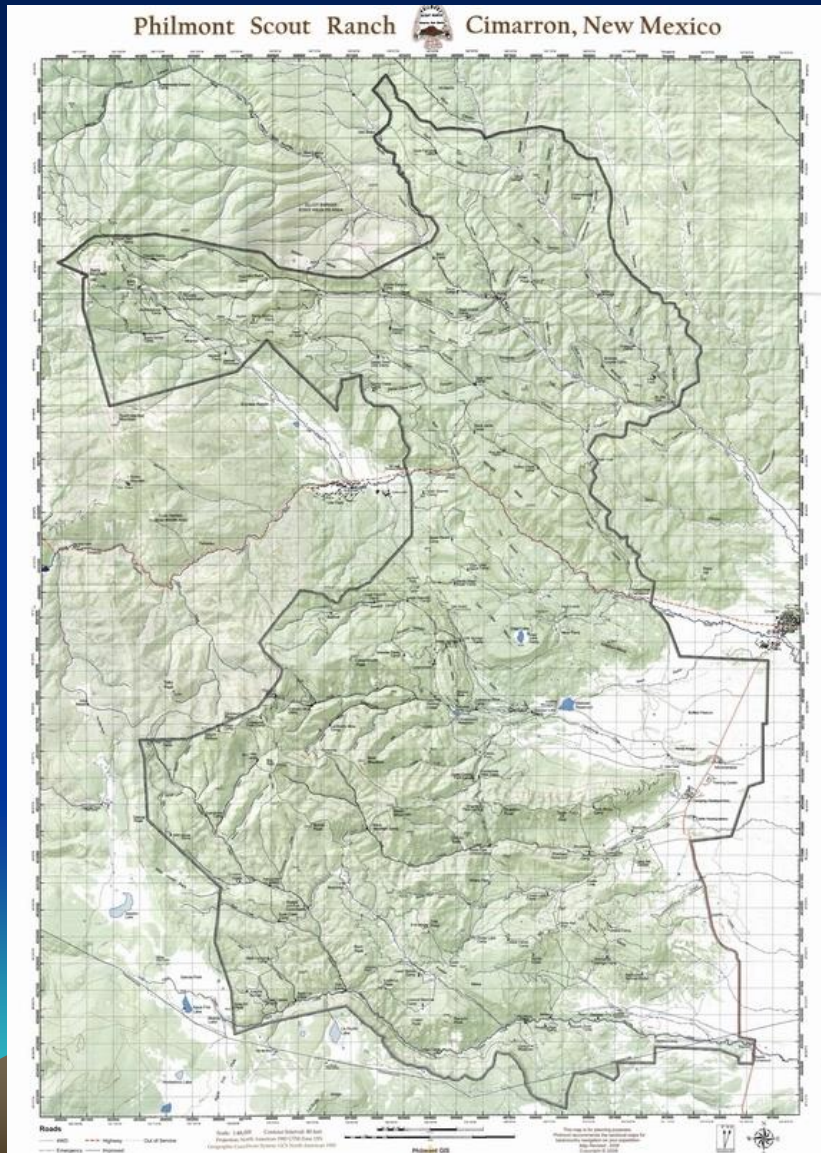
- Impressed with the stewardship of the Boy Scouts, Phillips donated an additional 91,000 acres in 1941
- He also donated the Philtower office building in Tulsa, Oklahoma for income to maintain the ranch

History of Philmont



Now 127,395 acres, the camp was renamed Philmont Scout Ranch

History of Philmont



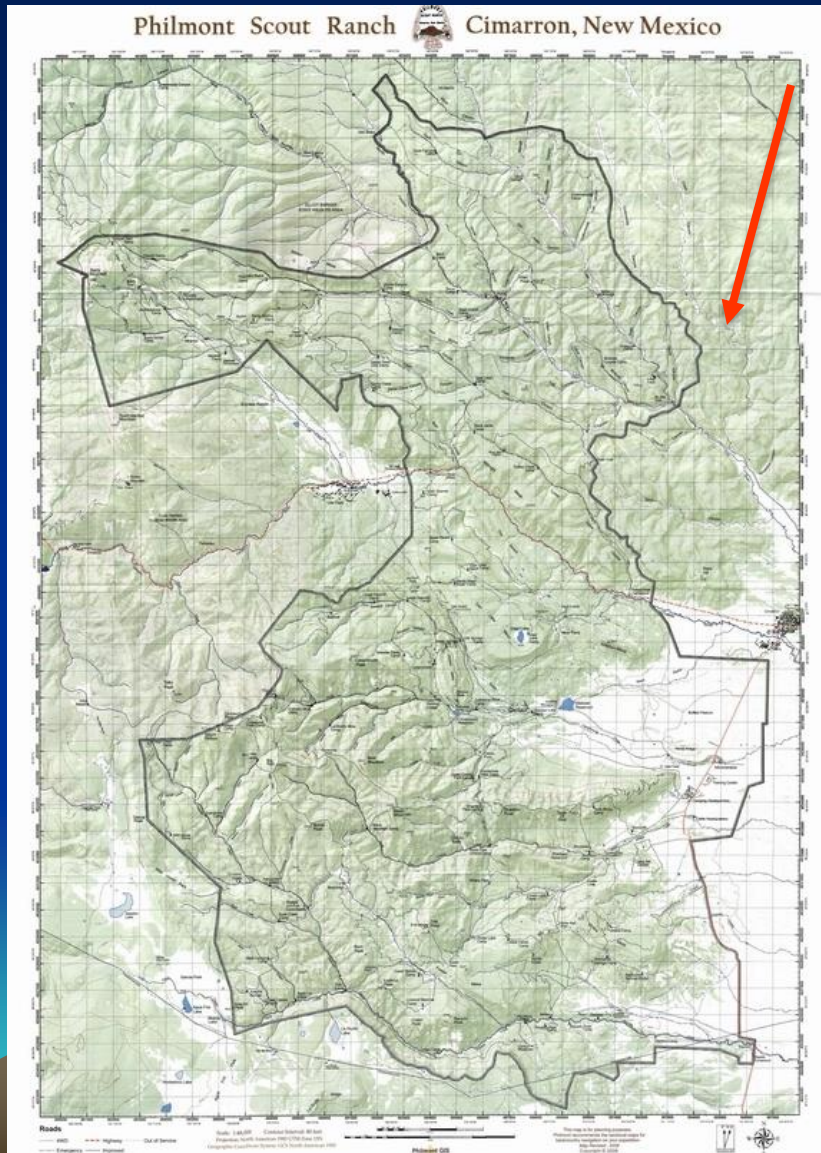
In 1963, 10,098 acres around Baldy Mountain was donated.

History of Philmont

- Philmont also operates on adjoining land, including
 - Valle Vidal (Valley of Life) in the Carson National Forest
 - Ted Turner's Vermejo Park Ranch

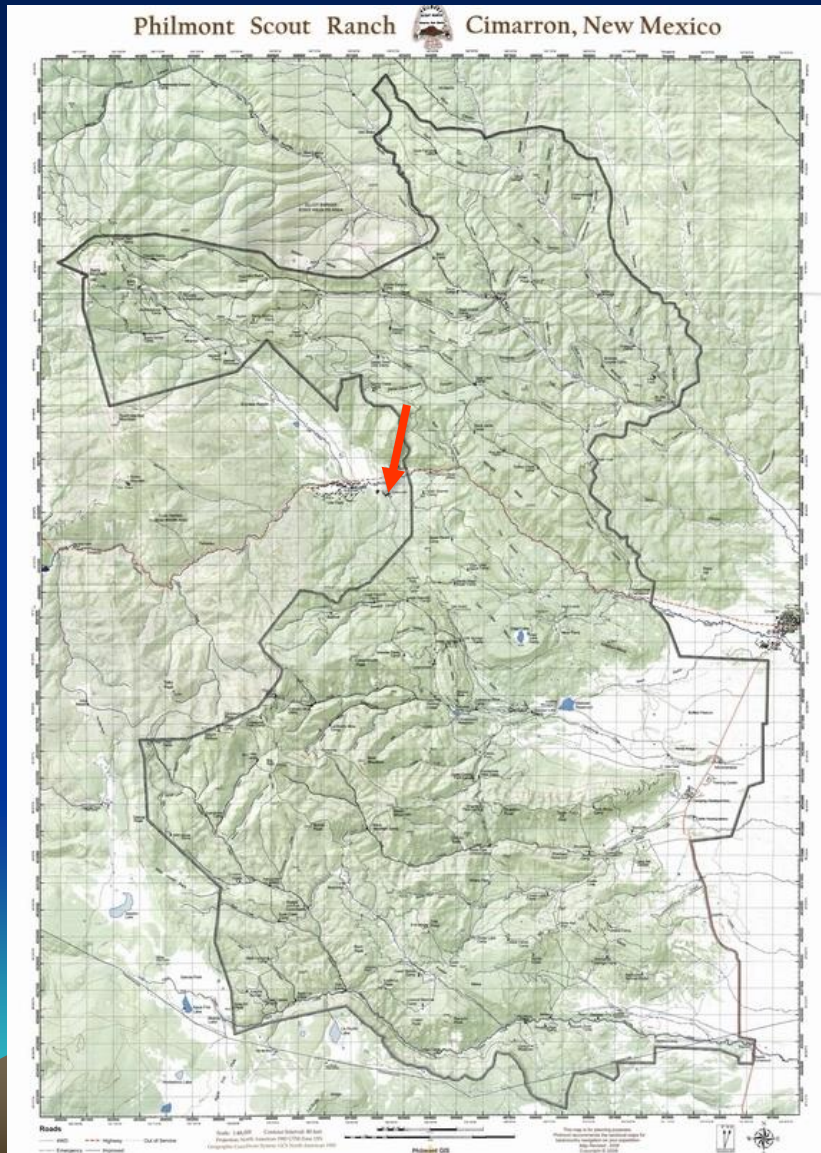


History of Philmont



In October 2013 Philmont signed a lease agreement with the Chase Ranch Foundation. This property to the East of Philmont added 11,000 acres.

History of Philmont



The latest addition was in 2015 with the purchase of the 2,684 acres Cimmaroncita Ranch.

Philmont Today

- 12-day backpacking treks are the primary programs during the summer
- Philmont Training Center
- Other programs include:
 - 7-day backpacking treks
 - Cavalcades (horseback treks)
 - Autumn Adventure (fall treks)
 - Kanik (winter camping)

Philmont Summer Treks

- Crews choose from 35 pre-planned itineraries
- About 30 crews arrive each day (and about 30 crews depart for home)
- About 3,500 trekkers plus staff are in the backcountry any given day

Questions?



Only nine more months and you will be as
happy as these guys

